

HOTEL SERVICES AND ACTIVITIES INFORMATION



Lafayette Beach
Pk 7 Arue, Tahiti Polynésie Française
Tel: 48 88 88 ou Réservations: 48 88 00
www.radisson.com/aruefrp

Radisson[®]
RADISSON PLAZA
RESORT TAHITI



EXECUTIVE SUMMARY

Radisson Hotels & Resorts Worldwide is one of the largest hotel groups in the world. Currently, there are more than 430 Radisson properties on 50 countries.

The Radisson Plaza Resort Tahiti brings Radisson genuine hospitality to the heart of French Polynesia.

The hotel is perfectly placed on the North East Coast of Tahiti, just 7kms and 10 minutes from the heart of Papeete. Close enough to get you to town in a short trip, but just far enough away to ensure you leave the stress of the office behind at the end of the day.

Welcome... that is how you will feel when you step into the Radisson Plaza Resort Tahiti. As soon as you enter your room you will feel even more at home. Every one of our 165 guest rooms are tastefully decorated in a contemporary Tahitian style. With broadband internet access in all our rooms and 24 hour access to our business centre, all your office-away from home needs are catered for.

Looking back at the history of the area, you will find it was Matavai Bay where such famous explorers as Captain Samuel Wallis, Captain James Cook, and Captain Louis-Antoine Bougainville came to anchor in the 1700s and of course, the home of the Tahitian Royal family!

The resort features an outdoor jacuzzi and a magnificent lagoon pool with sloping beach entry and waterfall edge blending with the turquoise waters of the sea. Overlooking the beach to Moorea, relax in the lounges and garden setting or take a refreshing swim in the clear waters of the Lafayette Beach.

Revitalise and rejuvenate the mind, body and soul at the end of a long day at the office in Tahiti's first purpose built Day Spa and Health Club. Enjoy a range of pampering beauty and health treatments in the cool surrounds of the Day Spa, or energise the body with pumping cardio and fitness activities.

The Radisson logo features the brand name in a black, cursive script font. A thick, horizontal green brushstroke underline is positioned beneath the letters 'i', 's', 's', and 'o'.

RADISSON PLAZA
RESORT TAHITI



RADISSON PLAZA RESORT TAHITI - PROFILE

| | |
|---|--|
| Address: | Lafayette Beach PK 7, ARUE, Tahiti French Polynesia |
| Phone: | +689 48 88 88 |
| Fax: | +689 48 88 89 |
| Website: | www.radisson.com/aruefrp |
| Email: | sales@radisson-tahiti.pf |
| Star Rating: | 5 Star |
| Location: | Located on Lafayette Beach, 7 kms North East of Papeete |
| Airport: | Distance from Airport to Hotel is 12km. Approximate one-way taxi fare is 2500xpf. |
| Owner: | Thierry Barbion |
| General Manager: | Philippe Périou |
| Director of Sales & Marketing: | Jeannine Bishop |
| Direct Phone: | + 689 48 88 04 |
| Direct Fax: | + 689 48 88 93 |
| Cell: | + 689 71 21 86 |
| Email: | jbishop@radisson-tahiti.pf |
| Market Co-ordinator: | Anaïs Eichhorn |
| Direct Phone: | + 689 48 88 09 |
| Direct Fax: | + 689 48 88 93 |
| Email: | aeichhorn@radisson-tahiti.pf |
| Sales Manager: | Nadine Attarian |
| Direct Phone: | + 33 6 60 41 81 34 |
| Direct Fax: | + 689 48 88 93 |
| Email: | nattarian@radisson.com |
| Reservations Manager: | Ghislaine Lé |
| Direct Phone: | + 689 48 88 00 |
| Direct Fax: | + 689 48 88 89 |
| Email: | resmanager@radisson-tahiti.pf |
| General Email Contact: | sales@radisson-tahiti.pf |



RADISSON PLAZA
RESORT TAHITI



FACILITIES & SERVICES

| Overview | |
|--------------------------------------|--------------|
| No. of Buildings: | 7 |
| Total No. of Rooms: | 165 |
| Non Smoking Buildings: | 2 |
| Rooms for the Physically Challenged: | 3 + 1 Suite |
| Disabled Access: | Public Areas |
| Check In Time: | 2:00pm |
| Check Out Time: | 11:00am |

| On Property Facilities & Services | |
|-----------------------------------|---|
| Restaurant | ✓ |
| 2 Bars | ✓ |
| Pool Bar (10:30am - 5:00pm) | ✓ |
| Pool (800m2) | ✓ |
| Jacuzzi | ✓ |
| Health & Fitness Centre | ✓ |
| Safety Deposit Box | ✓ |
| Business Centre | ✓ |
| Le Spa | ✓ |
| Sauna & Steam Room | ✓ |
| Laundry Service | ✓ |
| Boutiques | ✓ |
| Key Card Room Access | ✓ |
| Facsimile Service | ✓ |
| Hairdresser | ✓ |
| Copying Service | ✓ |
| Wake Up Calls | ✓ |
| Car Rental Desk | ✓ |
| PC/Printer Available | ✓ |
| Express Check Out | ✓ |
| Activities Desk | ✓ |
| Room Service | ✓ |
| Watersport Fare | ✓ |
| Associated Frequent Flyer | ✓ |
| Undercover Parking | ✓ |
| Booking via GDS | ✓ |
| Free Shuttle into Town | ✓ |
| Dep: 8:30am - Rtn: 12:30pm | |
| Dep: 2:30pm - Rtn: 5:30pm | |

| Guest Room Amenities | |
|---|---|
| Safe | ✓ |
| Colour TV | ✓ |
| Work Desk | ✓ |
| Alarm Clock | ✓ |
| Remote Control TV | ✓ |
| Hairdryer | ✓ |
| 2-Line Phone | ✓ |
| Satellite | ✓ |
| Scales | ✓ |
| Direct Dial Phone | ✓ |
| Air Conditioning | ✓ |
| Modem Connection on Phone | ✓ |
| Mini Bar | ✓ |
| Broadband Internet Access | ✓ |
| Coffee/Tea Maker | ✓ |
| Voicemail | ✓ |
| Refrigerator | ✓ |
| Guest Recognition Program | ✓ |
| Iron/Ironing Board (in Suites & Duplex only) | ✓ |

Radisson[®]

RADISSON PLAZA
RESORT TAHITI



ACCOMMODATION

| Ocean View Room (54) | Ocean View Room With Jacuzzi (32) | Ocean View Suite (52) | Ocean View Duplex Suite (27) |
|--|--|--|--|
| 2 Pax 2 Adult + 1 BB | 2 Pax 2 Adult + 1 BB | 3 Pax 3A + 1BB | 3 Pax 3A + 1BB |
| 1 King Size Bed or 2 Twin Beds | 1 King Size Bed or 2 Twin Beds | 1 King Size Bed or 2 Dbl Dbl + 1 Sofa Bed | 1 King Size Bed or 2 Dbl Dbl + 1 Sofa |
| Individually Controlled Air-Conditioning | Individually Controlled Air-Conditioning | Individually Controlled Air-Conditioning | Individually Controlled Air-Conditioning |
| Colour TV | Colour TV | Colour TV | Colour TV |
| Satellite TV | Satellite TV | Satellite TV | Satellite TV |
| Radio | Radio | Radio | Radio |
| Local & IDD Telephones | Local & IDD Telephones | Local & IDD Telephones | Local & IDD Telephones |
| Shower & Bath Tub | Shower & Jacuzzi | Shower & Bath Tub | Shower & Bath Tub |
| | | 2 Wash Basins | |
| Bath Robe | Bath Robe | Bath Robe | Bath Robe |
| Scales | Scales | Scales | Scales |
| Broadband Internet Access | Broadband Internet Access | Broadband Internet Access | Broadband Internet Access |
| Voltage of 220/60hz | Voltage of 220/60hz | Voltage of 220/60hz | Voltage of 220/60hz |
| Safe | Safe | Safe | Safe |
| Minibar | Minibar | Minibar | Minibar |
| Tea & Coffee Making Facilities | Tea & Coffee Making Facilities | Tea & Coffee Making Facilities | Tea & Coffee Making Facilities |
| Hair Dryer | Hair Dryer | Hair Dryer | Hair Dryer |
| Daily Housekeeping Service | Daily Housekeeping Service | Daily Housekeeping Service | Daily Housekeeping Service |
| Lanai-large covered balcony creating an external living room | Lanai-large covered balcony creating an external living room | Lanai-large covered balcony creating an external living room | Lanai-large covered balcony creating an external living room |
| | Jacuzzi on the Lanai | | |
| | | Iron & Ironing Board | Iron & Ironing Board |

In Ocean View and Ocean View jacuzzi rooms the iron & ironing board are available by calling housekeeping

Radisson

RADISSON PLAZA
RESORT TAHITI



FACILITIES & SERVICES

Safety & Security

- Smoke Detectors in all Guest Rooms
- Safety Chains on Guest Room Doors
- Emergency Exit Maps in all Guest Rooms
- Ventilated Stairwell
- Emergency Lighting
- Audible Smoke Detectors
- Parking Garage or Area Attendants
- Well-Lit Exit Signs
- Sprinklers in Hallways & Public Areas
- Well-Lit Parking Area(s) & Walkways
- Guest Room Windows Open
- Fire Detectors in all Guest Rooms
- Video Surveillance in Entrances & Hallways
- Guest Room Doors have Deadbolts
- Fire Detectors in Public Areas
- Smoke Detectors in Public Areas & Hallways
- Staff Trained in CPR & First Aid
- Auto-Recall Elevators
- Visual Alarms for Hearing Impaired
- Smoke Detectors in Hallways
- Public Address System
- Emergency Information in all Guest Rooms
- Guest Room Doors have View Ports
- 24 Hour Security
- Multiple Exits for Each Floor
- Parking Area Patrolled
- Fire Extinguishers in Hallways

Credit Cards Accepted

- American Express ✓
- JCB ✓
- Visa ✓
- Mastercard ✓
- Diners ✓

Business Centre

The Business Centre is Available 24 Hours

- Photocopying ✓
- Printing ✓
- Faxing ✓
- Internet Access ✓

General Secretarial Services

Available from Monday to Sunday
8:00am to 5:00pm

- Typing ✓
- Translation ✓
- Computers ✓
- French ✓
- English ✓
- Japanese ✓

A charge applies for the usage of internet and secretarial services



RADISSON PLAZA
RESORT TAHITI



FACILITIES & SERVICES - FOOD & BEVERAGE OUTLETS



Hiti Mahana, the resort's signature restaurant, is the place to be seen in Tahiti, offering an inspired & creative dining experience to the local community as well as the international traveller. Overlooking Lafayette Beach & Matavai Bay, Hiti Mahana is the only restaurant in Tahiti that offers both indoor, air-conditioned seating as well as alfresco dining.

Under the direction of our Executive Chef, Hiti Mahana offers a mix of local Tahitian, South East Asian dishes & international Mediterranean cuisine. Friday and Saturday nights feature special themed buffets, with a local Tahitian buffet on Friday nights, and BBQ buffet on Saturday nights, both completed with a Tahitian dance show.

Opening Hours:

Breakfast: 6:30am to 11:00am

Lunch: 12:00pm to 3:00pm

Dinner: 6:30pm to 10:00pm

Capacity: 150, including 52 seats in an air conditioning area.



The resort's Lafayette Bar takes its name from the famous-infamous Lafayette Bar of the 1940s, 50s & 60s which was located just opposite of where the hotels stands today. Once the most popular nightclub in Tahiti, it is where all the locals used to go after the town closed for the evening, & many story is told about this bar & its patrons' early morning exits.

While the new Lafayette Bar pays tribute to, rather than reproduces, its legendary predecessor, its distinctiveness makes it the social hub of the area. It features a stylish & relaxed atmosphere, & offers an extensive cocktail list & long list of beer selections, as well as full range of spirits, wines & Champagne. The resort's signature drink is the Pisco Sour.

Opening Hours: 4:00pm till late

Capacity: 125, including outside

JAMES NORMAN HALL LOUNGE

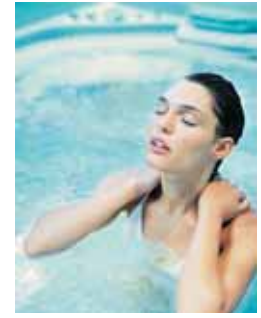
The James Norman Hall Lounge is the perfect place to relax with a cup of coffee or tea while waiting to meet a friend or business associate. Located to the right of the reception area, guests checking in to the hotel in the morning will be invited to sit, relax & enjoy a complimentary beverage of juice or coffee. In the afternoon, guests will be able to order from the beverage list (including beer & soft drinks in addition to coffee, tea, & juice) & enjoy the picturesque view of Matavai Bay.

Opening Hours: 7:00am to 4:00pm

Snack: Only for hotel guests from 11:00pm to 6:00am

Capacity: 25 seats

RADISSON PLAZA
RESORT TAHITI



FACILITIES & SERVICES



The resort's full service Spa (*le Spa*) offers an environment of harmony & relaxation where you can experience the unique & exotic benefits from traditional Tahitian beauty treatments. Signature treatments feature black sand & volcanic stones as well as indigenous fruits such as mango, guava, coconut, vanilla & papaya.

Opening hours for le Spa:
Monday to Sunday from 9:30am to 8:00pm

Features:

- Massage & personal body treatments
- 2 Double treatment rooms with double spa tubs with one room including a private steam room
- 2 Single treatment rooms
- 1 Sauna
- 1 Steam room
- 1 Rainfall shower
- 1 Relaxation lounge
- 1 Cosmetic lounge

FITNESS CENTRE

Opening hours are from 6:00am to 11:00pm

To access the fitness room guests need their room key

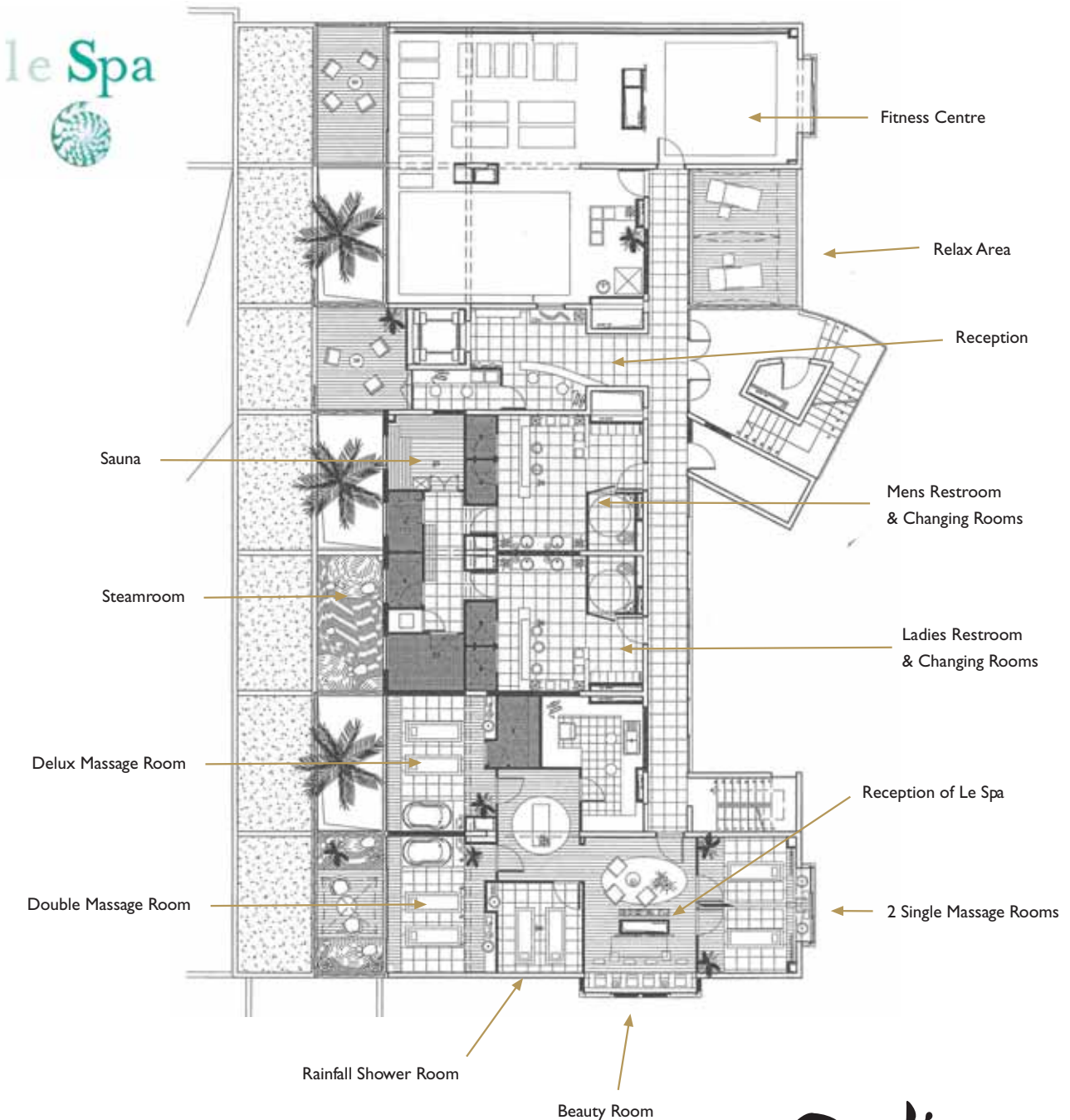
- Features:
- Professional yoga & aquagym classes
 - Extensive cardio fitness & free-weight equipments
 - Fitness classes
 - Tahitian dance lessons



RADISSON PLAZA
RESORT TAHITI



LE SPA & FITNESS CENTRE



RADISSON PLAZA
RESORT TAHITI



CONFERENCE & MEETING FACILITIES

With unparalleled tropical outdoors venues, meeting infused with warm Polynesian hospitality and tropical backdrop to inspire, Tahiti brings events and conferences to life.

RPRT is an ideal location offering a secluded tropical setting combined with the convenience of the resort location. Flexible range of conference and meeting facilities and the professional, friendly staff ensures every meeting is a success. The resort can accommodate a wide scope of event solutions from small off-site business meetings through to large conferences.

No matter how small or large the meeting or conference is, packages can be tailored and themed to create an event designed to specific needs. A full range of professional business and hotel services are available enabling a perfect mix of business and pleasure with the unique cultural and natural wonders of Tahiti.

| Rooms | Sq. Meter | Height | Cocktail | Theatre | U Shape | Class | Board | Banquet | Cabaret |
|--------------------------------------|-----------|--------|----------|---------|---------|-------|-------|---------|---------|
| Endeavour 1 | 260 | 4.0 | 350 | 325 | 52 | 125 | 56 | 200 | 84 |
| Endeavour 2 | 260 | 4.0 | 350 | 325 | 52 | 125 | 56 | 200 | 84 |
| Endeavour (1+2) | 520 | 4.0 | 700 | 650 | 104 | 250 | - | 420 | 176 |
| Captain Samuel Wallace Room 2 | 36 | 2.8 | 55 | 45 | 8 | 18 | - | 20 | 8 |
| Captain James Cook Room 1 | 36 | 2.8 | 55 | 45 | 8 | 18 | - | 20 | 8 |
| Captain Louis A. Bougainville Room 3 | 65 | 2.8 | - | - | - | - | 20 | - | - |
| Dolphin Meeting Room | 120 | 2.8 | 70 | - | 25 | 60 | - | - | 16 |
| Restaurant* "Hiti Mahana" | - | - | - | - | - | - | - | 40 | - |
| Lafayette Bar* | 400 | - | 250 | - | - | - | - | - | - |
| Endeavour - Patio | 125 | 4.0 | 128 | - | - | - | - | - | - |
| Endeavour - Garden | 250 | - | 380 | - | - | - | - | 160 | 80 |

Additional audio visual equipment required can be organised by the hotel at a cost

*Not to be used for sole use



RADISSON PLAZA
RESORT TAHITI



RACK RATES 2006



Ocean View Room



Ocean View Duplex Suite



Ocean View Suite

| Rack Rates 2006 | Prices In: XPF | en Euros |
|--|----------------|----------|
| Room Categories (165) | | |
| Ocean View Room (54) | 32 900 | 276 |
| Ocean View Room With Jacuzzi (32) | 39 000 | 327 |
| Ocean View Suite (52) | 43 700 | 366 |
| Ocean View Duplex Suite (27) | 46 300 | 388 |
| Extra Person | 7 000 | 59 |
| Taxes | | |
| Government Tax on Rooms | | 5% |
| VAT on Rooms | | 6% |
| * Local Tax to be paid directly at the hotel from the clients: 150 XPF (1,25 ₣) per person & per day | | |
| Children 3-12 years of age are complimentary if sharing with their parents & using existing bedding. Cots for infants 0- 3 will also be provided on a complimentary basis. | | |

Radisson®

RADISSON PLAZA
RESORT TAHITI



ROOM PLANS

OCEANVIEW ROOM

| Area of the Ocean View Room | |
|-----------------------------|---------------------------|
| Entrance | 2,44m ² |
| Bedroom | 19,20m ² |
| Bathroom | 6,16m ² |
| Closet | 1,50m ² |
| Total | 28,80m² |
| Terrace | 13,43m ² |



OCEANVIEW JACUZZI ROOM

| Area of the Jacuzzi Room | |
|--------------------------|---------------------------|
| Entrance | 2,44m ² |
| Bedroom | 19,20m ² |
| Bathroom | 6,00m ² |
| Jacuzzi Area | 5,35m ² |
| Closet | 1,50m ² |
| Total | 34,49m² |
| Terrace | 8,11m ² |



Radisson

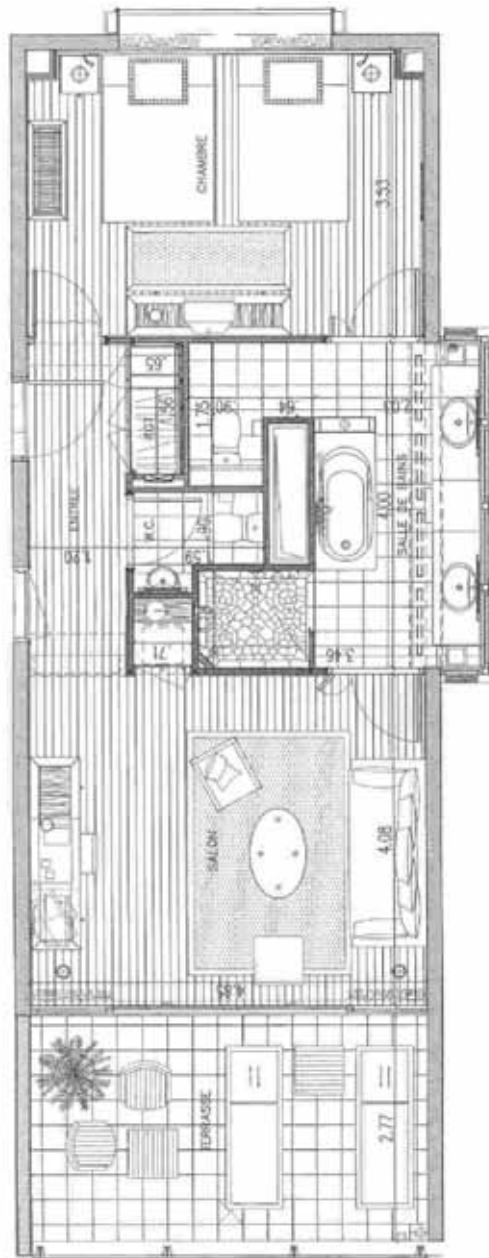
RADISSON PLAZA
RESORT TAHITI



ROOM PLANS

OCEANVIEW SUITE-TWIN

| Area of the Suite | |
|-------------------|---------------------------|
| Entrance | 5,03m ² |
| Living Room | 20,52m ² |
| Bedroom | 19,28m ² |
| Bathroom | 12,13m ² |
| Restroom | 1,75m ² |
| Closet | 1,00m ² |
| Total | 59,71m² |
| Terrace | 13,43m ² |



Radisson

RADISSON PLAZA
RESORT TAHITI





ROOM PLANS

OCEAN VIEW SUITE

| Area of the Suite | |
|-------------------|---------------------------|
| Entrance | 5,03m ² |
| Living Room | 20,52m ² |
| Bedroom | 17,17m ² |
| Bathroom | 12,13m ² |
| Restroom | 1,75m ² |
| Closet | 1,00m ² |
| Total | 56,60m² |
| Terrace | 13,43m ² |



Ocean View Room



Ocean View Suite

Radisson

RADISSON PLAZA
RESORT TAHITI



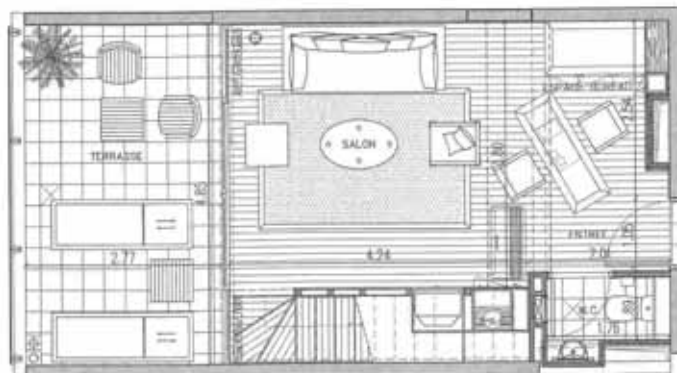
ROOM PLANS

DUPLEX

| Area of the Duplex - Lower Floor | |
|----------------------------------|---------------------------|
| Entrance | 2,17m ² |
| Office Area | 4,75m ² |
| Living Room | 6,25m ² |
| Bathroom | 1,85m ² |
| Area of the Duplex - Upper Floor | |
| Bedroom | 14,15m ² |
| Bathroom | 7,30m ² |
| Hallway | 3,15m ² |
| Closet | 1,00m ² |
| Total | 50,62m² |
| Terrace | 13,43m ² |
| Balcony | 3,95m ² |
| Stairways | 4,08m ² |



Upper Floor

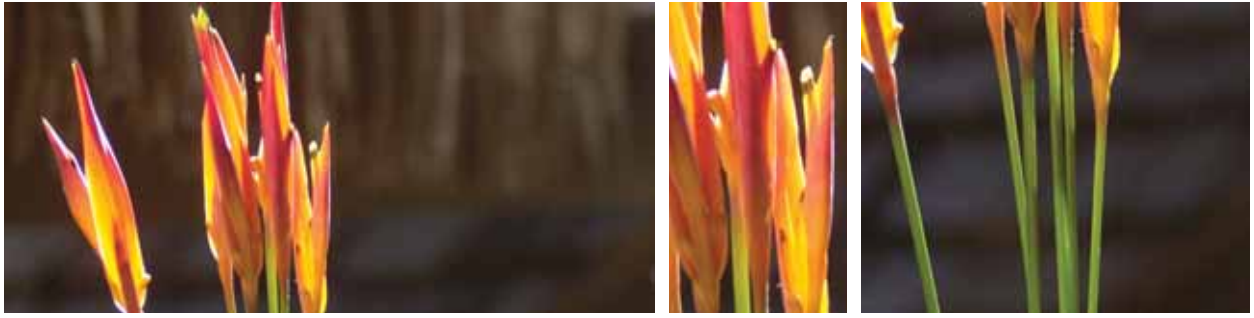


Lower Floor

Radisson

RADISSON PLAZA
RESORT TAHITI





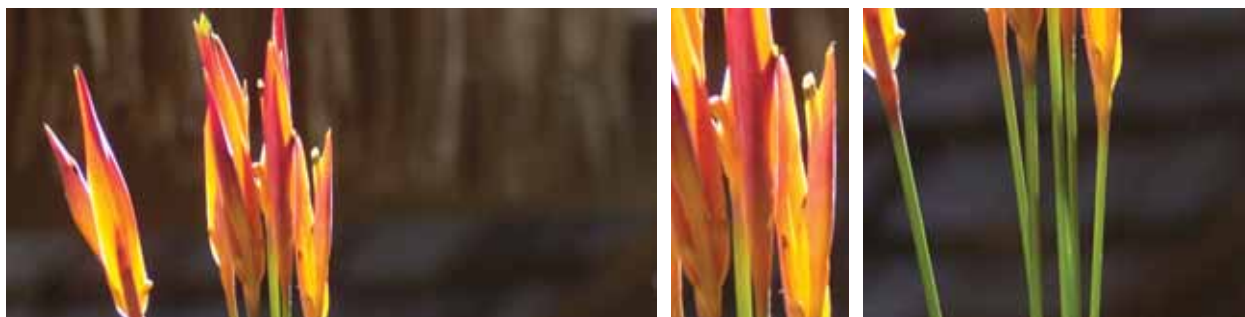
RACK RATES 2006

| Rack Rates 2006 | Prices In:* | XPF | Euros |
|--|--------------------|------------|--------------|
| Food & Beverage | | | |
| Continental Buffet Breakfast Per Person | | 2 000 | 17 |
| American Full Buffet Breakfast Per Person | | 2 820 | 24 |
| American Modified Plan | | 8 700 | 73 |
| American Plan | | 12 400 | 104 |
| Lunch (Set Menu 2 Courses) (Entrée/Main or Main/Dessert) | | 4 100 | 34 |
| Dinner (Set Menu 3 Courses) (Entrée/Main/Dessert) | | 5 880 | 49 |
| BBQ Buffet | | 6 000 | 50 |
| Sunday Brunch | | 3 730 | 31 |
| Others: | | | |
| Child Menu (Refer to End of Page) | | | |
| Supplement Room Service (Per Person) | | 1 200 | 10 |
| Taxes | | | |
| VAT on Meal | | | 10% |
| VAT on Other Services | | | 10% |
| Children Policy (refer to children policy) | | | |
| Food & Beverage: Children 0- 3 years are free of charge. 4-12 years 50% | | | |
| Food & Beverage: Based on the adult Food & Beverage rate. Children menu available. | | | |

*Tax Not Included in Price

Radisson®

RADISSON PLAZA
RESORT TAHITI



RACK RATES 2006

| Romantic Package | Prices In: XPF | Euros |
|---|-----------------------|--------------|
| Romantic Dinners: | | |
| Starlight Dinner | 30 430 | 255 |
| Private Lanai Dinner "Delicious Sunset" | 36 590 | 307 |
| Polynesian Wedding Ceremonies: | | |
| Polynesian Wedding | 66 500 | 557 |
| Royal Polynesian Wedding | 174 500 | 1 462 |
| Other Services | | |
| Necklace of Flowers | 1 000 | 8 |
| Flower Arrangement Standard | 2 900 | 24 |
| Flower Arrangement De Luxe | 4 500 | 38 |
| Bed of Flowers | 12 000 | 101 |
| Prestige Bed of Flowers for Jacuzzi Rooms | 13 000 | 109 |
| Fruit Basket Standard | 2 800 | 23 |
| Fruit Basket De Luxe | 3 800 | 32 |
| Mud Cake / Opera / Strawberries- 2 People | 2 800 | 23 |
| Mud Cake / Opera / Strawberries- 4 People | 4 600 | 39 |
| Plate of French Cheese | 2 250 | 19 |
| Champagne (75cl) Louis Roederer* | 7 450 | 62 |
| Bottle of Louis Roederer (75cl) with 8 Canapés* | 10 000 | 84 |
| Wine (75cl): Red, White, Rosé* | 2 450 | 21 |
| Musical duo 1/2 hour | 17 500 | 147 |
| Musical Trio 1/2 hour | 25 000 | 210 |

Tax Not Included in Price
Price Per Couple

* Beverage prices may vary according to the current regulation.

Radisson®

RADISSON PLAZA
RESORT TAHITI



EXCURSIONS 2006

| Water Activities | Prices In: | XPF | Euros |
|---|-------------------|------------|--------------|
| Watersport Fare - (Reserved for Hotel Guests Only) : Opening Hours 8:30am to 4:45pm (Everyday) | | | |
| Kayaks | | 1 500 | 13 |
| Simple Kayak | | 1 500 | 13 |
| Double Kayak | | 2 000 | 17 |
| Visit of the Dolphins | | | |
| Including: Visit of the Dolphins, Historical Overview of Matavai Bay, Guided Snorkelling Tour & a Coconut Demonstration | | | |
| From 9:00am to 11:00am (Everyday) Min 2 Pax - Maximum 60 Persons | | 5 900 | 41 |
| Guided Snorkelling Tour | | | |
| From 9:30am to 11:00am (Everyday) Min 2 Pax - Maximum 60 Persons | | 4 800 | 40 |
| Diving | | | |
| 1 Fun Dive (Certified Diver) Min 2 Persons | | 7 200 | 60 |
| 2 Tank Fun Dives (Certified Diver) | | 12 200 | 102 |
| 5 Fun Dives (Certified Diver) | | 28 500 | 239 |
| 10 Fun Dives (Certified Diver) | | 56 000 | 469 |
| 1 Introductory Dive (Non Certified) Beach Dive | | 6 000 | 50 |
| 1 Night Dive (Certified Diver) | | 12 200 | 102 |
| Private Dive 1/2 Day | | 78 000 | 654 |
| Open Water Course (5 Beach Dives + 4 Boat Dives + Logbook + Certification + Book) | | 65 200 | 546 |
| Advanced Open Water Course (5 Boat Dive + Book + Certification) | | 39 600 | 332 |
| 3-Dive Package, East Coast (1 day) Min 4 Persons | | 18 300 | 153 |
| Best of Tahiti (Certified Diver) 4-Dive Package (2 Days) Min 4 Persons | | 22 800 | 191 |
| Water Skiing | | | |
| Beginner 20 Minutes | | 3 850 | 32 |
| Advanced 10 Minutes | | 2 750 | 23 |
| Accompanying Person | | 1 100 | 9 |

The Prices are in Polynesian French Francs (XPF) - Including VAT & Tax

The Prices can be Increased Without Notification; The Excursions can be Modified or Cancelled Without Notification

Radisson®

RADISSON PLAZA
RESORT TAHITI



EXCURSIONS 2006

| Activities | Prices In: | XPF | Euros |
|---|------------|--------|-------|
| Surf & Body Board | | | |
| Min 3 Persons on Mondays, Tuesdays, Thursdays & Fridays | | | |
| Discovery Formula - Half Day Morning: 8.30am to 12.00pm, Afternoon 1:30pm to 5.00pm. Including lessons with a certified surf instructor | | | |
| Equipment (Surfboards, Bodyboards, Suit), Transfers to & from the hotel, Insurance | | 4 800 | 40 |
| 2 Day Introductory Lessons - 2 x Day - Min 2 Persons | | 11 900 | 100 |
| Rentals - Surf & Bodyboard | | | |
| 1 Hour | | 1 500 | 13 |
| Half Day | | 3 000 | 25 |
| Full Day | | 4 000 | 34 |
| Fly Surf | | | |
| Everyday - Introduction to Fly Surf - 2 Day Program - Max 3 Persons | | | |
| Beginners - Pick Up at 10:00am or 2:00pm (3 Hours) | | 19 000 | 159 |
| Advanced - Pick Up 9:30am or 1:30pm (2 Hours) | | 11 000 | 92 |
| Moorea Day Tour | | | |
| Min 4 Persons - A Visit of the Belvedere followed by a picnic on a motu & the feeding of the rays | | 19 000 | 159 |
| Departure at 8:15am Return at 3:00pm | | | |
| Speedboat Rental with Driver | | | |
| Max 6 Persons - Boat rental for 1 hour - | | 18 000 | 150 |
| Deep Sea Fishing | | | |
| Min 4 Persons - Max 6 Persons - Half Day Morning: 7:45am until 12:00pm & Afternoon: 1:00pm until 5:00pm | | 16 500 | 138 |
| Athletic Half Day Deep Sea Fishing | | 66 000 | 553 |

The Prices are in Polynesian French Francs (XPF) - Including VAT & Tax

The Prices can be Increased Without Notification; The Excursions can be Modified or Cancelled Without Notification

Radisson®

RADISSON PLAZA
RESORT TAHITI



EXCURSIONS 2006

| Land Activities | Prices In: | XPF | Euros |
|---|------------|--------|-------|
| Full Day Tour: Island Tour of Tahiti | | | |
| Special full day tour of Tahiti | | | |
| - Available on Sunday (Does not include entrance and lunch) | | 4 600 | 38 |
| Half Day: Island Tour of Tahiti | | | |
| Morning Tour: East Coast Discovery | | | |
| Visit of a Pareo Factory, Tomb of King Pomare V, Tahara's View Point, Venus Point, the Blow Hole, the Waterfalls | | | |
| Not Available on Saturday & Sunday | | 4 600 | 38 |
| Morning Tour: The History & Legends of Tahiti | | | |
| Including James Norman Hall Museum (Guided Visit: 30 Minutes), Tahara's View Point, the Blow Hole, Vaipahi Gardens, Maraa Grottoes, the Museum of Tahiti & Her Islands (Guided Visit: 40 Minutes) | | | |
| - Not Available on Monday & Sunday | | 3 980 | 41 |
| Mountain 4 Wheel Drive Safari | | | |
| Half Day | | 5 800 | 49 |
| Full Day: Picnic Included | | 10 000 | 84 |
| Helicopter Flightseeing | | | |
| Min 4 Persons - Tahiti Discovery Tour (20 Minute Flight) | | 15 700 | 132 |
| Moorea Discovery Tour (35 Minute Flight) | | 25 500 | 215 |
| Tahiti Nui and Tahiti Iti Discovery | | 78 000 | 235 |
| Transfers are Included in the Price | | | |

Radisson®

RADISSON PLAZA
RESORT TAHITI



EXCURSIONS 2006

| Land Activities | Prices In: | XPF | Euros |
|--|------------|--------|-------|
| Quads - 3 Units | | | |
| No Min - Max 6 Persons - 3 Hours Guided Tour (1 or 2 Persons Per Quad) | | 18 000 | 151 |
| The Prices are in Polynesian French Francs (XPF) - Including VAT & Tax The Prices can be Increased Without Notification; The Excursions can be Modified or Cancelled Without Notification | | | |
| Guided Nature Walk/Hiking Day - Upon Request | | | |
| The Belvédère or the Fautau Valley | | | |
| Morning: 8:00am till 12:00pm - Afternoon: 1:00pm to 5:00pm | | 5 500 | 49 |
| Full day | | 10 000 | 84 |
| Min 2 Persons | | | |
| Guided Nature Walk/Hiking - Upon Request | | | |
| Full Day - Level Easy to Middle | | | |
| Fautau Valley: Visit of One of the Tallest Waterfalls (130 Metres) | | | |
| Ring of the Belvédère: Discover the Hamuta Passage (at 900 Metres) | | | |
| Te Faaiti Valley: Discover the First Natural Park, with Her Natural Jacuzzis | | | |
| Faananu Valley: Explore the Very Colourful Fauna & Waterfalls of this Valley | | | |
| Mateoro Valley: Very Flowery Valley with its Small Canyons | | | |
| Vallic Tuauru: Discover the basaltic organs | | | |
| Piorai: fare Mato (The first refuge) | | | |
| Vaipohe valley: bathing spots and orchards | | | |
| Food (upon request) | | 1 200 | 10 |
| For the Valley of Fautau an Access Tax of 600XPF Per Person is required | | 8 000 | 67 |

Advance Hiking/Nature Walks are available upon request.

The Prices are in Polynesian French Francs (XPF) - Including VAT & Tax

The Prices can be Increased Without Notification; The Excursions can be Modified or Cancelled Without Notification

Radisson[®]

RADISSON PLAZA
RESORT TAHITI